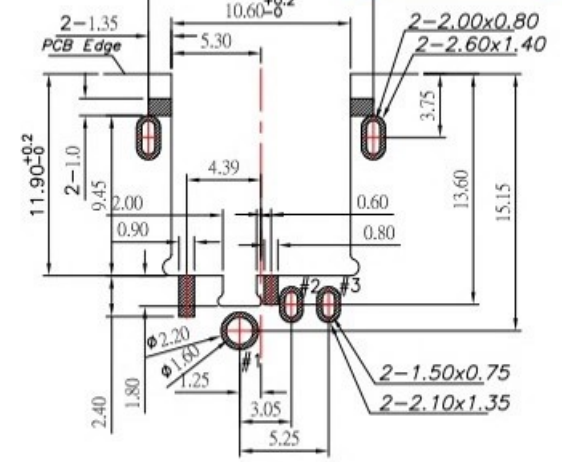
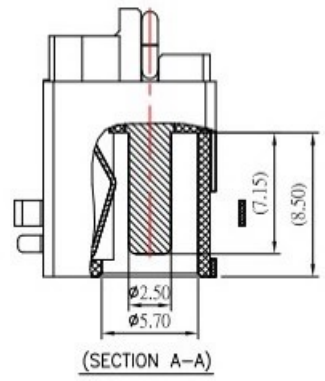
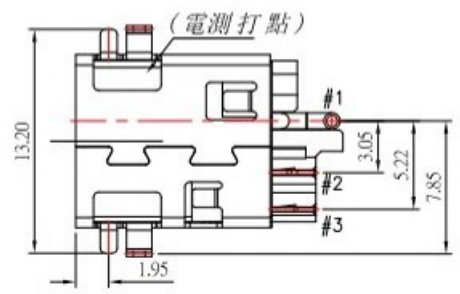
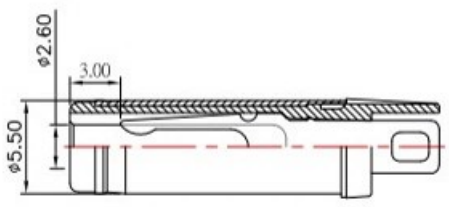
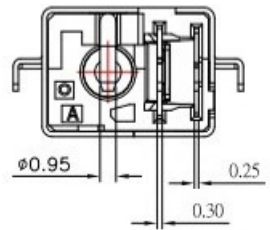


Date Code:YYMMDD
 YY: YEAR(17~XX)
 MM: MONTH(01~12)
 DD: DAY(01~31)



P.C.B LAYOUT MOUNTING PATTERN (TOP VIEW)



SPECIFICATION

- Rating : DC 20V, 10.0A
- Contact resistance : ≤ 30mΩ
- Insulation resistance : ≥ 100MΩ
- Withstand voltage : 500VAC
- Insertion and extraction force : 3-30N
- life test : 5,000 cycles ◦

MODEL NO.	DC-S3018H-x
SCHEMATIC	#1
	#2
CENTER PIN	φ2.0 mm
	φ2.5 mm

6	TERMINAL	1	SUS	
5	AHELL	1	BRASS	Ni-Plating
4	CENTER PIN #1	1	H65	Ni/Gold-Plating
3	SHUNT TERMINAL #2	1	BRASS	Gold/Ni/Tin-Plating
2	TIP SPRING #3	1	PHOSPHOR BRONZE	Gold/Ni/Tin-Plating
1	HOUSING	1	LCP(Black)	
NO.	DESCRIPTION	QTY	MATERIAL	PLATING

东莞市高迪电子有限公司
 Dong Guan KDRR Electronic Switch Jack Co., Ltd.

TOLERANCE UNLESS OTHERWISE STATED :
 Up to 5 ±0.2
 Above 5 - 15 ±0.3
 Above 15 - 30 ±0.4
 Above 30 - 50 ±0.5
 Angle ±0.3

3RD. ANGEL'S

UNITS MM

DRAWN BY:	DATE	MATL	TITLE	JACK
Jack Lu	08/09/21			
CHECKED BY:	DATE	FINISH	MODLE	DC JACK
Jacky Chen	08/09/21			
APPROVED BY:	DATE	SCALE	DWG NO.	DC-S3018H-x-S214
Tony Kao	08/09/21	1 : 1		
SHEET NO.	1 of 1	PART NO.	DC-S3018H-x-S214	SIZE A4
				VER R2

2	更新料號	Jack	080921
1	更新料號	Jack	062121
ITEM NO	DESCRIPTION	DRAWN	DATE